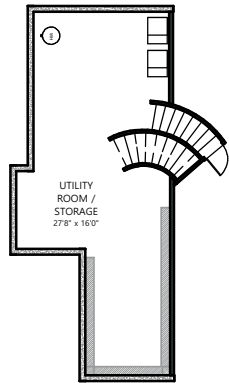




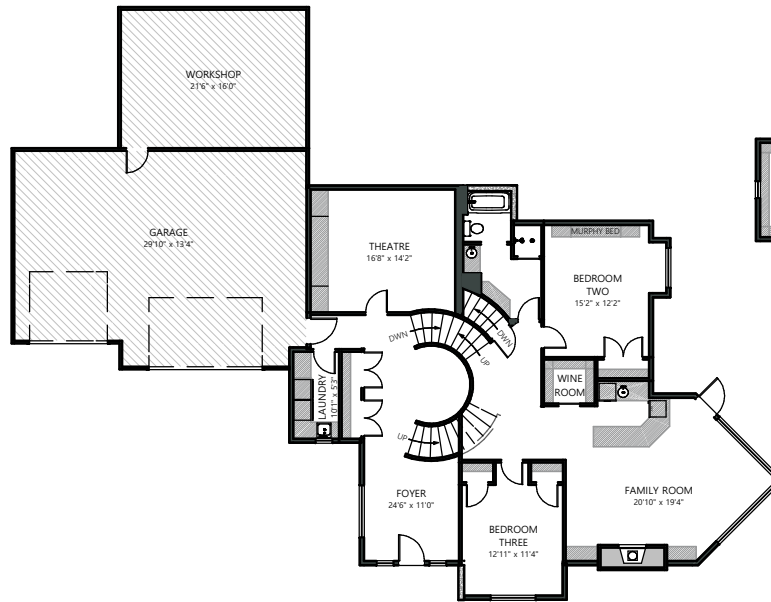
**03.05.2021 - 25159 Escarpment Ridge View**

Main - 738.34 sq.ft/ 68.59 M2  
Upper - 1,212.64 sq.ft/ 112.65 M2  
Third - 1,537.17 sq.ft/ 142.80 M2  
Lower - 1,183.00 sq.ft/ 109.90 M2  
Basement - 643.07 sq.ft/ 59.74 M2  
RMS Area - 3,488.15 sq.ft/ 324.04 M2  
Total With Below Grade - 5,314.22 sq.ft/ 493.68 M2

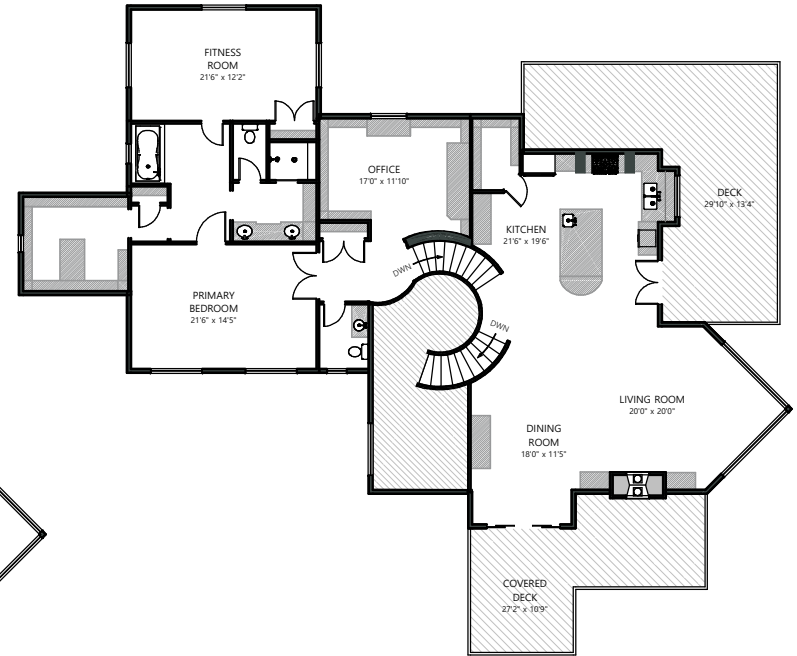
Jonathan Popowich - Realtor  
Remax iRealty Innovations  
(403) 404 0300  
admin@popowichgroup.com  
www.PopowichRealEstate.com



BASEMENT



MAIN / LOWER



THIRD / UPPER

PHOTOGRAPHY | HD VIDEO TOURS | MEASURING & FLOOR PLANS | VIRTUAL STAGING

Measurements are insured and are based on local guidelines.

This floor plan is an illustration based on the measurements taken and existing structures of the property.

It is intended to be used only by the purchaser of the transaction.

