

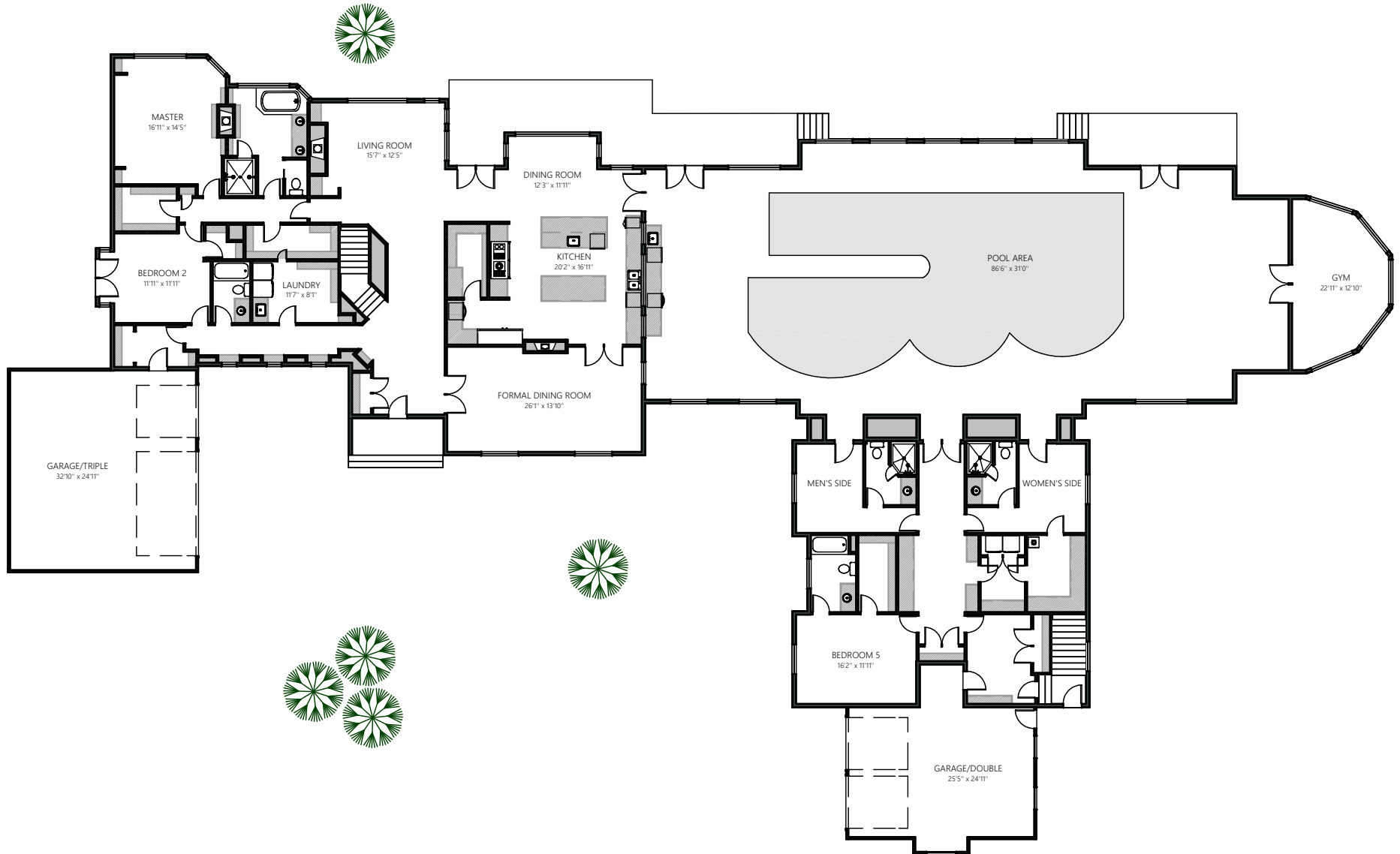
43 Westbluff Ridge Rocky View No.44 - 01.23.2018

Main - 7,657.36 sq.ft/ 711.37 M2

RMS Area - 7,657.36 sq.ft/ 711.37 M2

Basement - 2,730.17 sq.ft/ 253.63 M2

Total - 10,387.53 sq.ft/ 965.00 M2



43 Westbluff Ridge Rocky View No.44 - 01.23.2018

Main - 7,657.36 sq.ft/ 711.37 M2

RMS Area - 7,657.36 sq.ft/ 711.37 M2

Basement - 2,730.17 sq.ft/ 253.63 M2

Total - 10,387.53 sq.ft/ 965.00 M2

